



HIGH PERFORMANCE VERTICAL TURNING CENTER

PUMA VT

1100

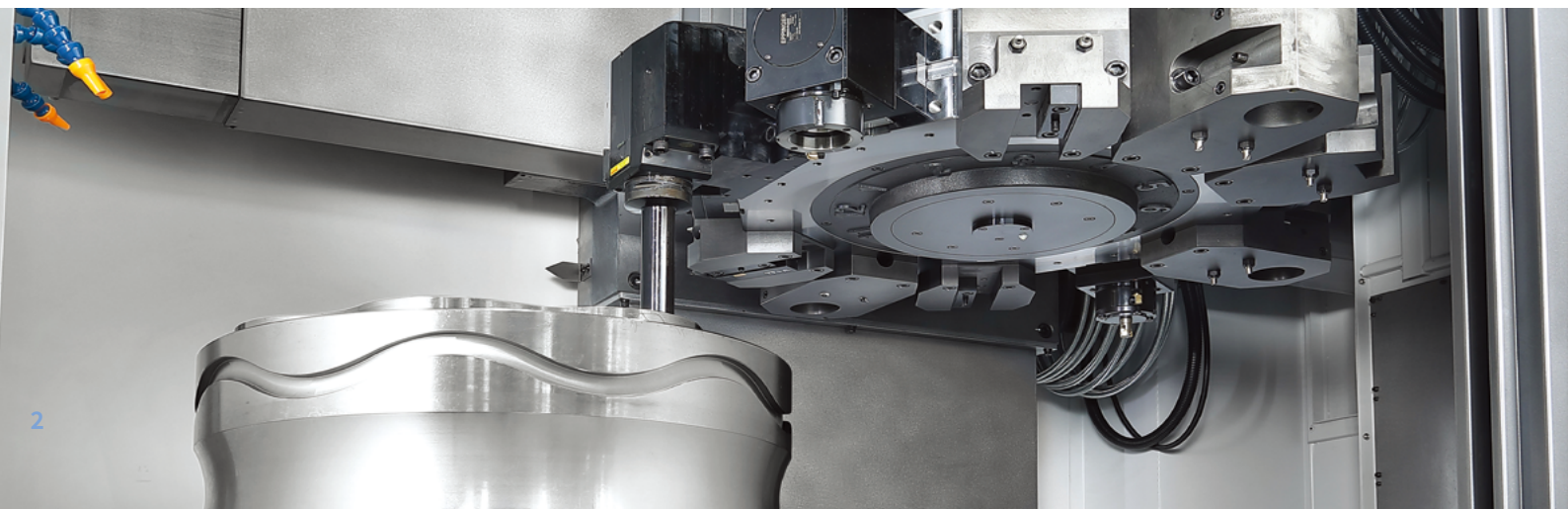


DN SOLUTIONS

PUMA VT 1100

The vertical turning center is designed for long term accuracy, heavy duty cutting and to minimize floor space.

Its powerful spindle drives, meehanite casting and integral box guide way provide unsurpassed rigidity.





FURTHER ENHANCED TURNING CAPACITY

The turning capacity achieved 32" of max. chuck size and 1100 mm of max. turning diameter.

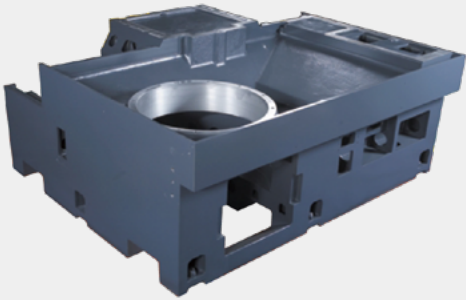
HIGH RELIABILITY

In order to assure heavy duty machining and optimized chip flow, the machine base body is designed and streamlined.

USER FRIENDLY DESIGN

The bed structure has been redesigned to facilitate the efficient disposal of high volumes of chips. In addition, the height of the operation panel can be adjusted for optimum convenience. Fixed type pendants are also available to suit customers' requirements.

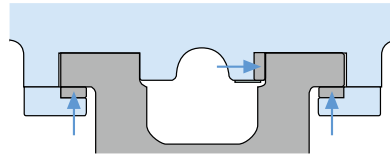
BASIC STRUCTURE



Robust bed construction

In order to assure heavy duty machining and optimized chip flow, the machine base body is designed and streamlined.

Its small foot print help you systemizing your manufacturing plan plot in your factory.



3Gibs Support on each for longterm and easy to maintain accuracy



Robustcolumn construction

The wide hardened and ground box ways reduce vibration promoting better tool life and surface finishes. The box ways are turcite coated which allows for 787 ipm rapid traverse rates. The Balanced Counter Weight located inside the column, neutralizes the gravity effect on the Vertical slide. It will also conserve electricity and prevent Turret Drop while in Emergency stop or Power failure. All axis Slides are Induction Hardened and Ground Hrc 55 Hardness. Long-term Accuracies are very basic requirements on our products.

MACHINING AREA

Wider machining area for larger / more diverse workpieces.

Max. turning diameter

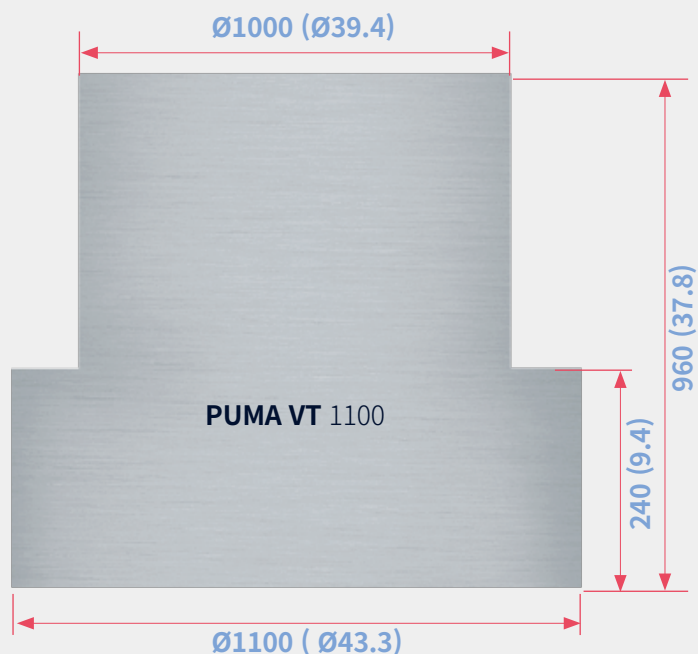
Ø 1100 mm
Ø 43.3 inch

Max. turning height

960 mm
Ø 43.3 inch

Chuck size

32 inch



SPINDLE

Higher reliability and rigidity with improved base and spindle motor assembly.

High performance spindle

The highly rigid gearbox structure provides the highest power / torque in its class for heavy duty cutting and optimum performance. A variety of spindle specifications are available to suit customers' diverse requirements.

Max. spindle speed

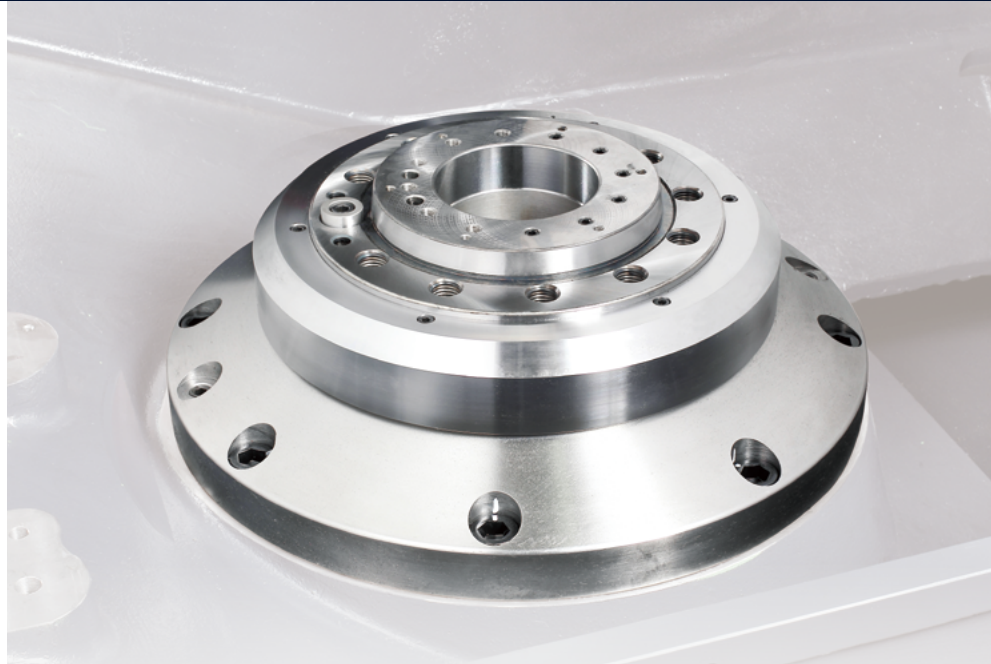
1800 r/min

Max. power (S6 25%/S1 Cont.)

65/45 kW
87.2/60.3 Hp

Max. torque

7552 N·m
5573.4 ft-lbs



Description		Unit	VT 1100
Spindle	Speed	r/min	850
	Power	kW (Hp)	65 / 55 / 45 (80.5 / 73.8 / 60.3) (S6 25% / S6 40% / S1 Cont.)
	Max. torque	N·m (ft-lbs)	7552 (5573.4)
C-axis minimum rotation command angle (M type)		deg	0.001

TURRET

The new servo turret facilitates faster indexing and accurate positioning.

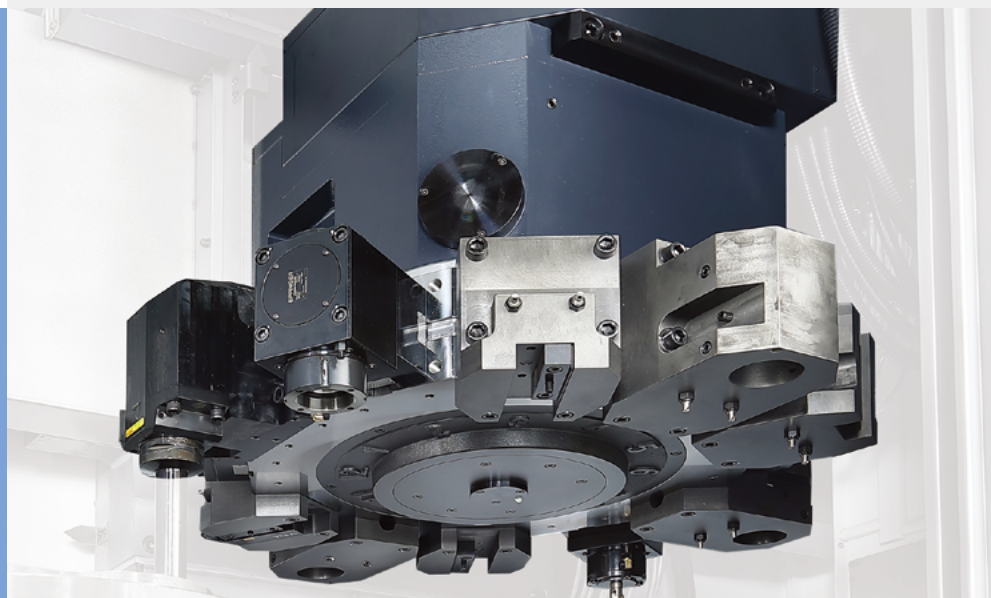
Fast and accurate turret

The new servo motor turret increases indexing speed and accuracy. The M model uses BMT85P turret to provide excellent milling performance and reduced thermal error due to low heat generation design.

Rotary tool max. power (S3 60%/Cont.)

PUMA VT1100M

11 / 7.5 kW
14.8 / 10.1 Hp



No. of tool positions

12 st

Rotary tool max. speed

3000 r/min

3-axis BMT85P Turret

* The above image has Quick change tooling option for ATC.

STANDARD | OPTIONAL SPECIFICATIONS

Diverse optional features are available for customer-specific work applications.

Description	Features	PUMA VT1100
Chuck (LEFT / RIGHT)	610 mm (24 inch)	X
	800 mm (32 inch)	●
	1000 mm (40 inch)	○
	None	○
Jaw (LEFT / RIGHT)	Soft jaw	●
	Hard jaw (Hardened & Ground Hard Jaws)	○
Chucking option	Dual pressure chucking	○
	Chuck clamp confirmation	○
	Hydraulic chuck & actuating cylinder *1	○
Coolant pump	4.5 bar	●
	7/10/14.5/70 bar	○
Coolant option	High coolant interface	○
	Oil Skimmer(Belt type)	○
	Coolant chiller(circulation type) *2	○
	Coolant pressure switch	○
Chip conveyor	Side chip conveyor(Left)_Hinged type	○
	Side chip conveyor(Left)_Magnetic scraper	○
	Rear chip conveyor_Hinged type	○
	Rear chip conveyor_Magnetic scraper	○
Chip processing options	Chip bucket	○
	Coolant flushing	○
	Air gun	○
	Coolant gun	○
Automatic configuration	Auto door with safety edge	○
	Automatic side door	○
	Work & Tool counter	○
	ATC(Automatic tool changer)	○
Robot Interface	PMC I/O MODULE TYPE	○
	PROFIBUS-DP TYPE	○
Customized Special Option	Coolant level switch_sensing level_Low	○
	Quick change tooling (CAPTO)	○
	Mist Collector_2.2 KW	○
	Accumulator For Hydraulic Power Unit	○
	Air Blower Through Turret_With Coolant	○
	Raised Column_200 mm	○
	Auto work measurement	○
	Spindle gear box cooling system	○
Rotary type window wiper(Eletrical)	○	

Please contact your DN Solutions representative for detailed machine information.

● Standard ○ Optional X N/A

*1 : In case of chuck specification change, it may be necessary to replace the chuck cylinder.

*2 : Coolant chiller is highly recommended to prevent temperature rise and minimize thermal deformation, when using a water-insoluble coolant or high-pressure coolant system of which the power is over 1.5 kw.



There is a high risk of fire when using non-water-soluble cutting fluids, processing flammable materials, neglecting the controlled and careful use of coolants and modifying the machine without the consent of the manufacturer. Always check the SAFETY GUIDELINES carefully before using the machine.

AUTOMATIC TOOL CHANGER OPTION

Capto tool of ATC provide the higher productivity at difficult to cut material.

Max. spindle speed

850 r/min

Max. motor (30 min)

60 kW 80.5 Hp



Description	Unit	Specifications
Tool shank	-	CAPTO C8
Tool storage capacity	ea	12
Max. tool diameter	mm (inch)	110 (4.3)
Max. tool length	mm (inch)	450 (17.7)
Max. tool mass	kg (lb)	15 (33.1)
Tool Search Time (1 PORT)	sec	0.8
No. of CAPTO Tool Holder on turret	ea	1~12

**Please contact DN Solutions to select detailed ATC specifications*

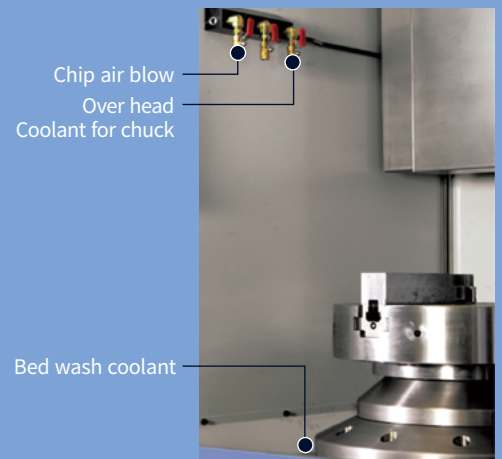
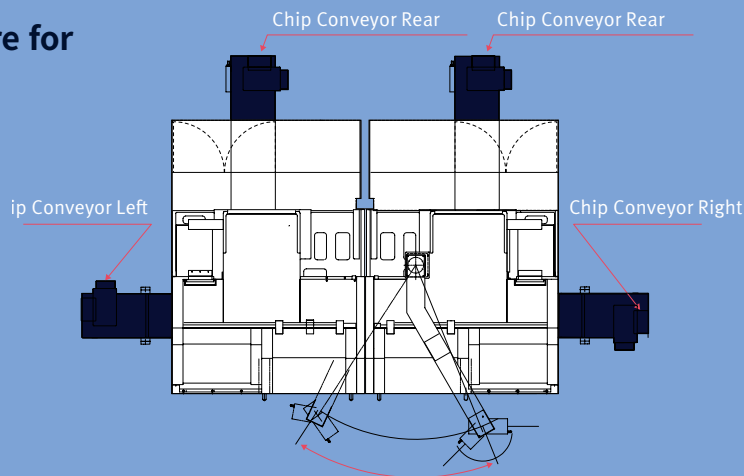
PUMA VT11000/M



CHIP DISPOSAL

Chip disposal system offers improved maintainability for either manual operation or automated system.

Bed structure for easier chip disposal



Accessories



Gear box
PUMA VT1100 (Standard)



Auto door
Pneumatic cylinder



Manual tool setter
Removable type, Renishaw



Quick change tooling (CAPTO)

DN SOLUTIONS FANUC i PLUS

DN Solutions Fanuc i Plus maximizes customer productivity and convenience.

15" Screen + New OP

DN Solutions Fanuc i Plus' operation panel enhances operating convenience by incorporating common-design buttons and layout. It features a Qwerty keyboard for fast and easy data input and operation.

DN Solutions Fanuc i Plus

- 15-inch color display
- Intuitive and user-friendly design

USB and PCMCIA card QWERTY keyboard

- EZ-Guide i standard
- Ergonomic operator panel
- 2MB Memory
- Hot keys



iHMI touchscreen OPTION

iHMI provides an intuitive interface that uses a touchscreen for quick and easy operation.

Range of applications

Providing various applications related to planning, machining, improvement and utility, for customer convenience.

NUMERIC CONTROL SPECIFICATIONS

FANUC

Division	Item	Specifications	PUMA VT1100	PUMA VT1100M
			DN Solutions Fanuc i Plus	DN Solutions Fanuc i Plus
Controlled axis	Controlled paths		1 Path	1 Path
	Controlled axes		2 (X,Z)	3 (X,Z,C)
	Simultaneously controlled axes		2 axes	3 axes
Data input/output	Fast data server		○	○
	Memory card input/output		●	●
	USB memory input/output		●	●
	Larger capacity memory_2GB	Note *2) Available Option only with 15" Touch LCD (iHMI Only)	○ *2)	○ *2)
Interface function	Embedded Ethernet		●	●
	Fast Ethernet		○	○
	Enhanced Embedded Ethernet function		●	●
Operation	DNC operation	Included in RS232C interface.	●	●
	DNC operation with memory card		●	●
Program input	Workpiece coordinate system	G52 - G59	●	●
Feed function	AI contour control I	G5.1 Q_, 40 Blocks	●	●
	AI contour control II	G5.1 Q_, 200 Blocks	○	○
Operation Guidance Function	EZ Guidei (Conversational Programming Solution)		●	●
	iHMI with Machining Cycle	Note *1) Only with 15" Touch LCD standard	○ *1)	○ *1)
	Multi path function	Supporting 2 or 3 path machine	●	●
	EZ WORK		●	●
Setting and display	CNC screen dual display function		●	●
Network	FANUC MTConnect		*	*
	FANUC OPC UA		*	*
Others	Display unit	15" color LCD	●	●
		15" color LCD with Touch Panel	○	○
	Part program storage size & Number of registerable programs	5120M(2MB)_1000 programs	●	●

● Standard ○ Optional X N/A ⊕ Available

CONVENIENT OPERATION

SIEMENS S828D

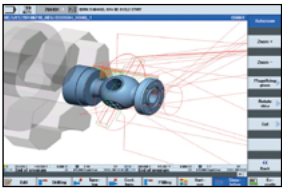
15.inch display + New OP

Siemens 828D' operation panel enhances operating convenience by incorporating common-design buttons and layout. It features a Qwerty keyboard for fast and easy data input and operation.

- 15.6 inch display
- USB (standard)
- QWERTY keyboard

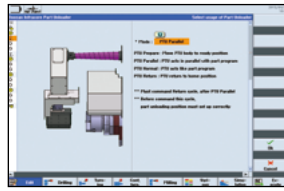


Convenient conversational functionality



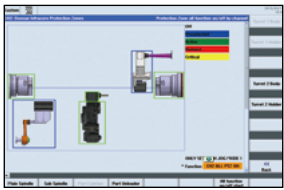
Cutting and operation support function

This function shows a cutting and tool path simulation in real-time.



Shop-turn mode
[various]
[attachments]

The automation elements (parts catcher, parts unloader etc.), can be easily controlled via interactive screens.



[Custom]
[Protection zones]

Operation safety function

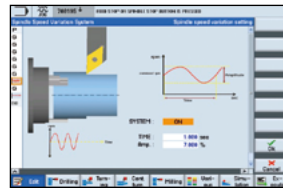
Protection Zone Synchronized Actions checks the interference between the turret and the spindle to prevent collisions caused by operator error.



[offset]
[operating parameter]
[TC service]

Maintenance and service convenience function

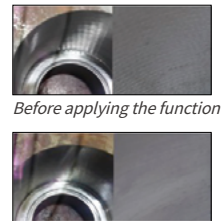
Maintenance and service of major equipment and peripheral devices, including the timer and parts counter settings can be easily undertaken.



[various]
[attachment]
[DSSV]

Machining accuracy improvement

The NC controls spindle speed at an optimal level for precision threading and turning, making it possible to automatically improve surface roughness.



NUMERIC CONTROL SPECIFICATIONS

SIEMENS

Division	Item	Specifications	2-Axis	M
			S828D	S828D
Controlled axis	Controlled axes		X,Z,SP	X,Z,C,R
	Simultaneously controlled axes		4 axes	4 axes
Data input/output	Memory card input/output		X	X
	USB memory input/output		●	●
Interface function	Ethernet	(X130)	○	○
	On network drive	(without EES option, Extcall)	○	○
Operation	On USB storage medium, e.g. memory stick	(without EES option, Extcall)	●	●
	Program input	Workpiece coordinate system	●	●
Feed function	Advanced surface		X	X
	Top surface		X	X
	Look ahead number of block		1	1
	3D simulation, finished part		●	●
Programming & Editing function	Simultaneous recording		●	●
	DXF Reader for PC integrated in SINUMERIK Operate		○	○
	Shopturn		●	●
Operation Guidance Function	EZ Operation package		●	●
	Setting and display	Operation via a VNC viewer	●	●
Network	MTConnect		●	●
	OPCUA		○	○
Others	Display unit	15.6" color display with touch screen	○	○
		CNC user memory 10 MB	●	●
		CNC user memory 100 MB	○	○
		CNC user memory 6GB	X	X
		CNC user memory 40GB (with PCU or IPC)	X	X
		CNC user memory without limit (Execution from external storage devices) (EES / Using by USB or Network)	○	○
		HMI user memory for CNC part program 6GB	X	X

POWER | TORQUE

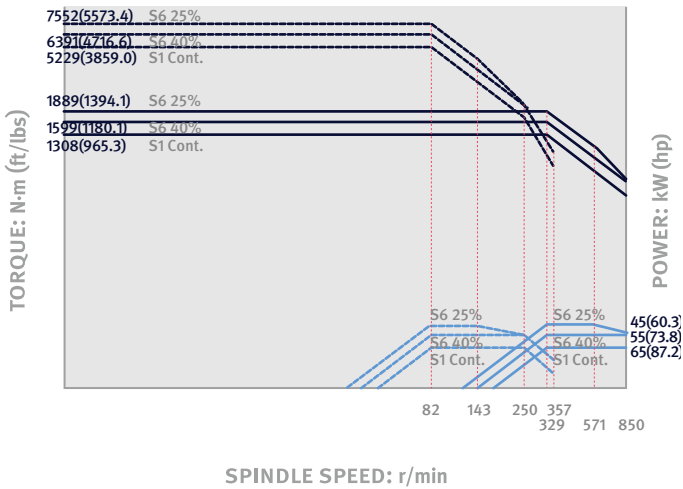
FANUC

PUMA VT1100/M

Max. spindle speed : **850** r/min

Max. power : **65** kW
87.2 Hp

Max. torque : **7552** N·m
5573.4 ft-lbs

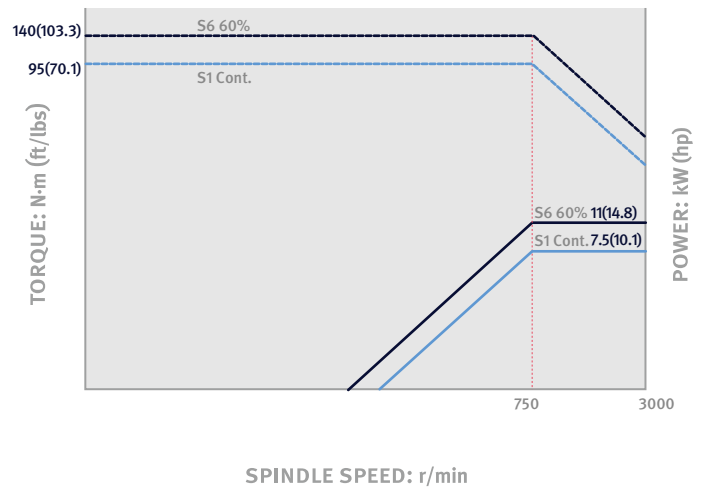


Rotary tool_PUMA VT1100M OPTION

Max speed of live tool : **3000** r/min

Max power of live tool : **11** kW
14.8 Hp

Max. torque : **140** N·m
103.3 ft-lbs



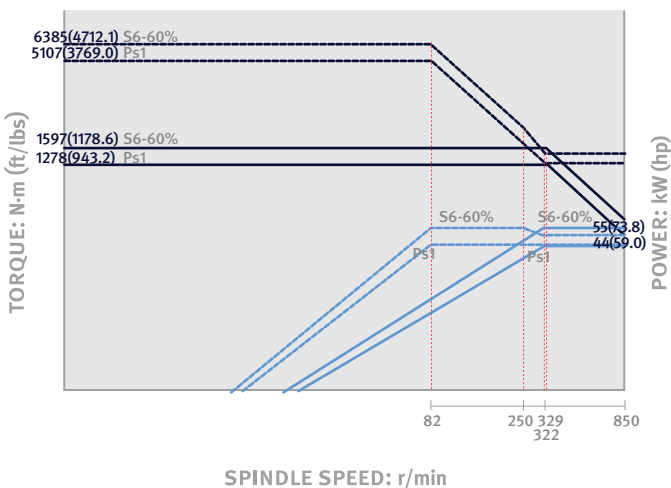
SIEMENS

PUMA VT1100/M

Max. spindle speed : **850** r/min

Max. power : **55** kW
73.8 Hp

Max. torque : **6385** N·m
4712.1 ft-lbs

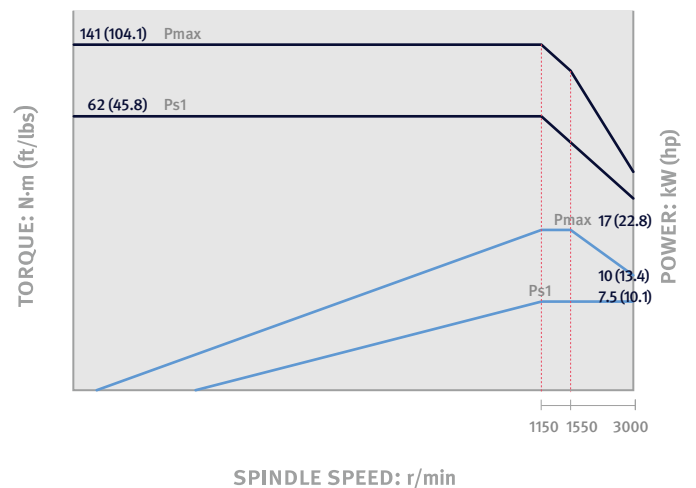


Rotary tool_PUMA VT1100M OPTION

Max speed of live tool : **3000** r/min

Max power of live tool : **17** kW
22.8 Hp

Max. torque : **141** N·m
104.1 ft-lbs

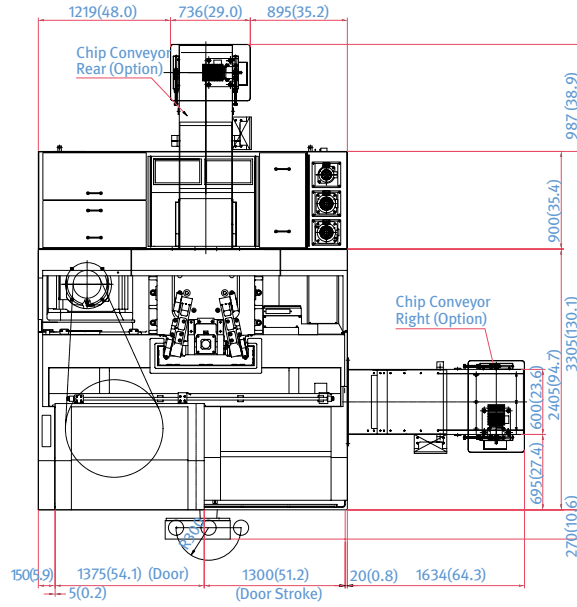


EXTERNAL DIMENSIONS

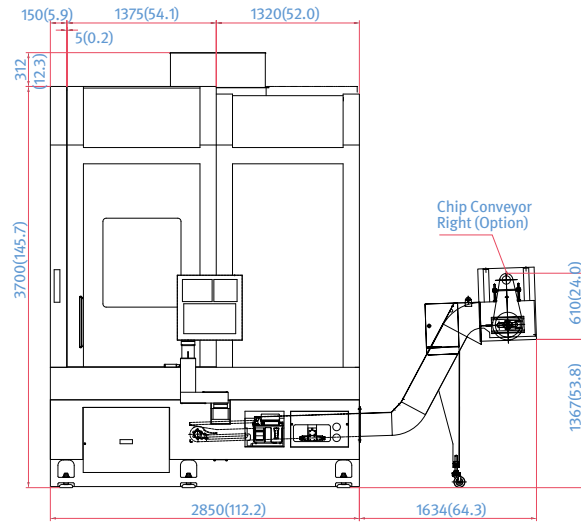
PUMA VT1100/1100M

단위 : mm

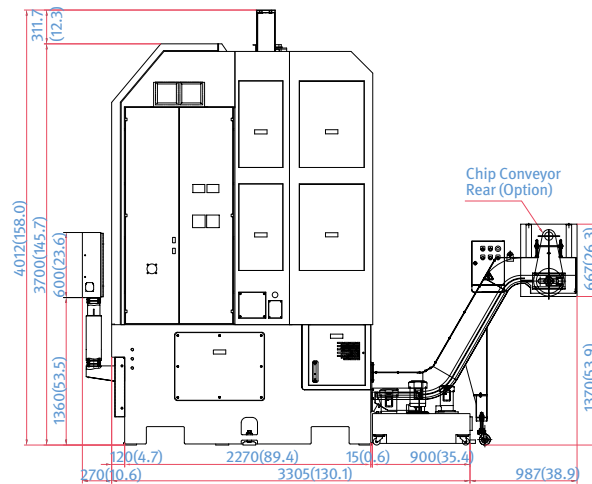
TOP



FRONT



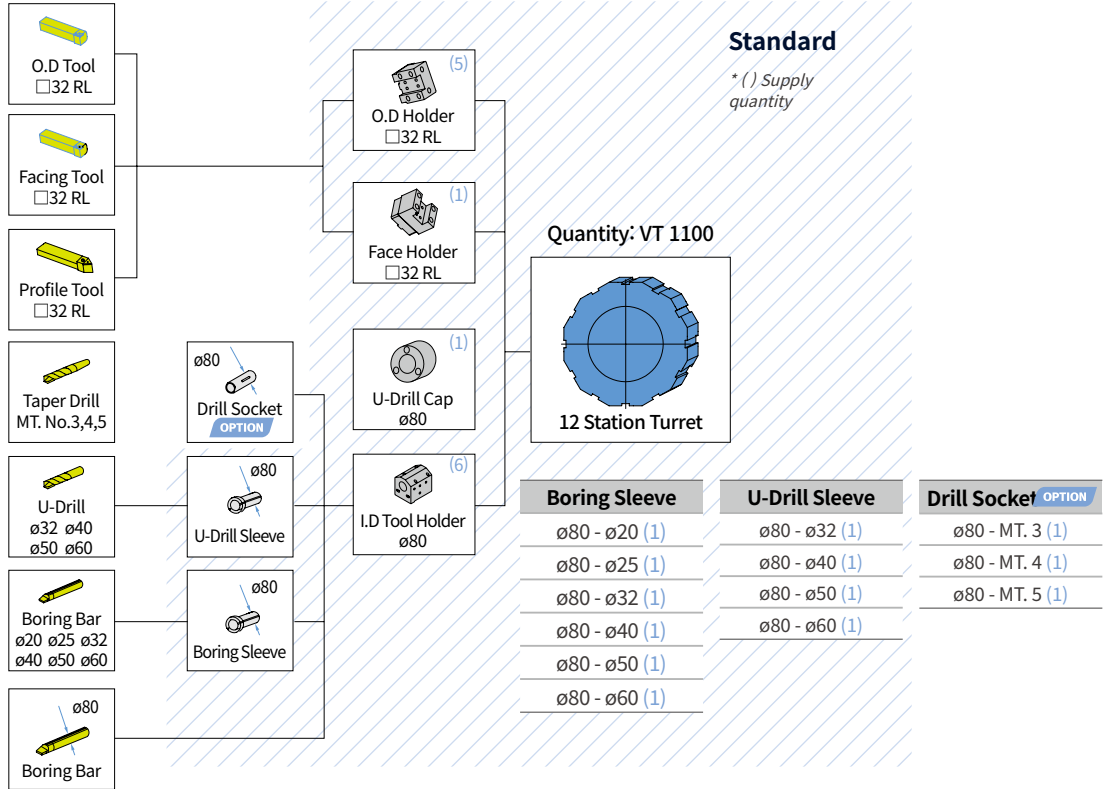
SIDE



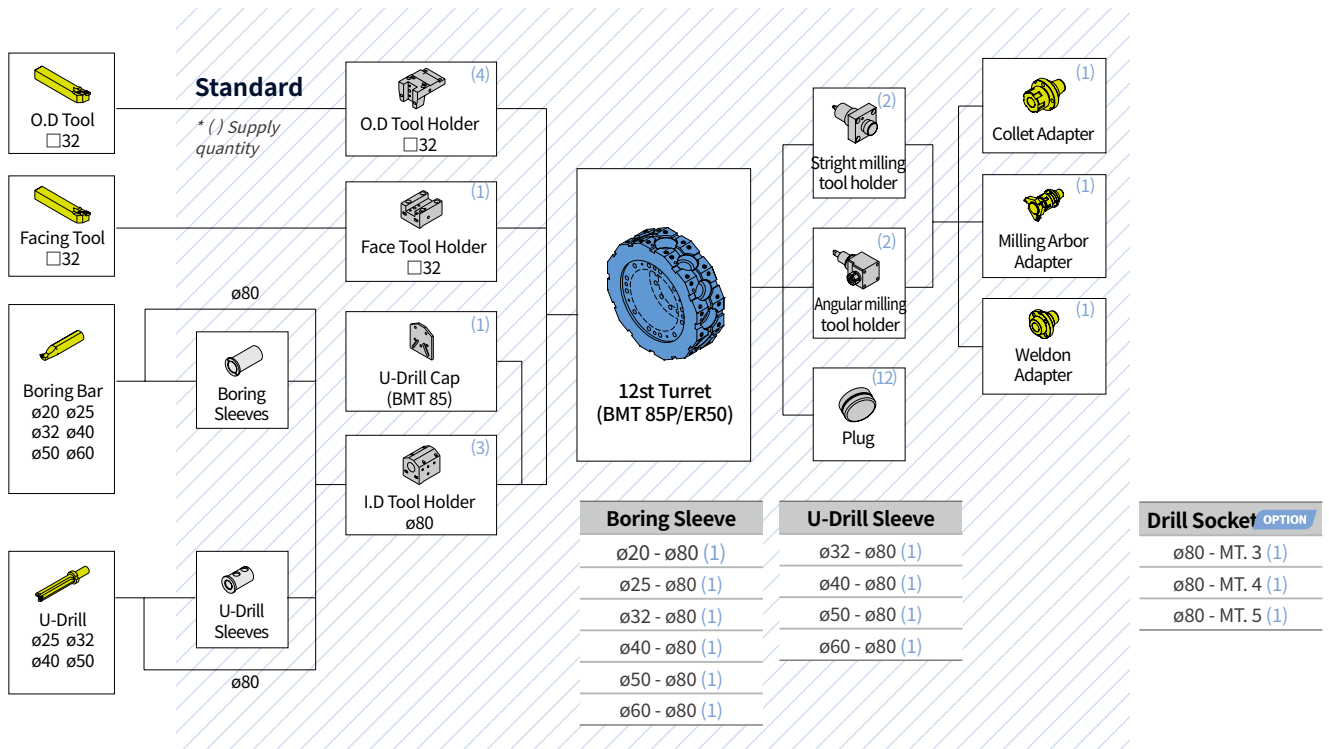
TOOLING SYSTEM

PUMA VT1100

단위 : mm

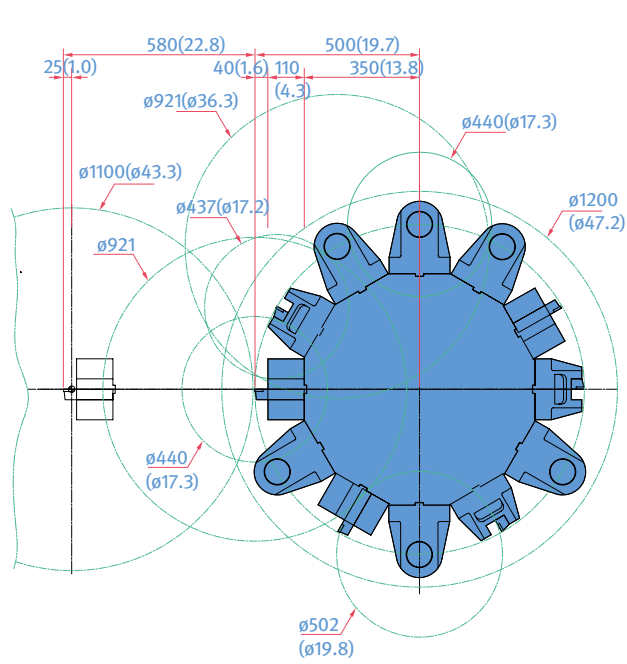


PUMA VT1100M



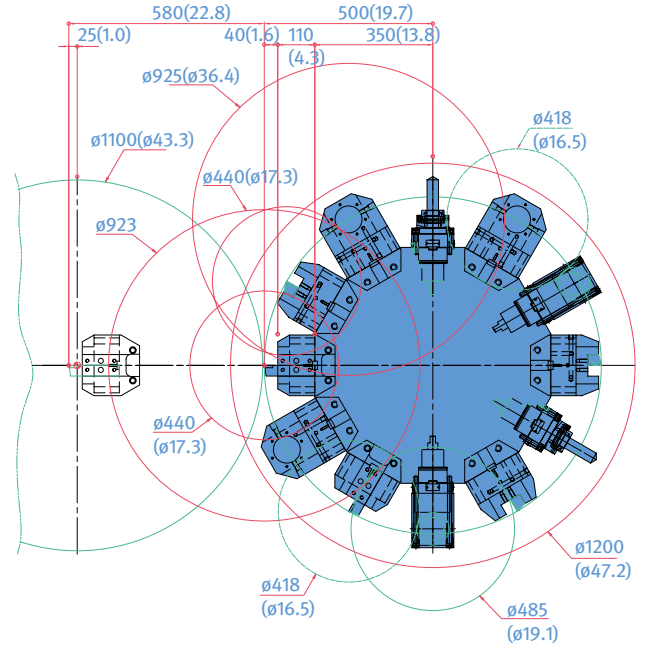
TOOL INTERFACE

PUMA VT1100



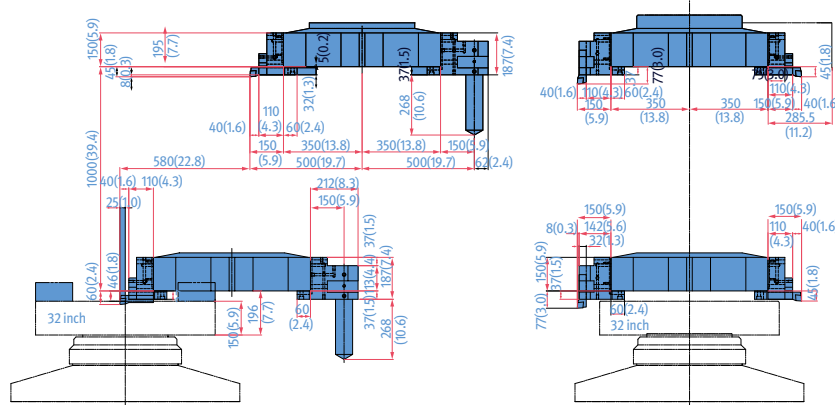
PUMA VT1100M

단위 : mm

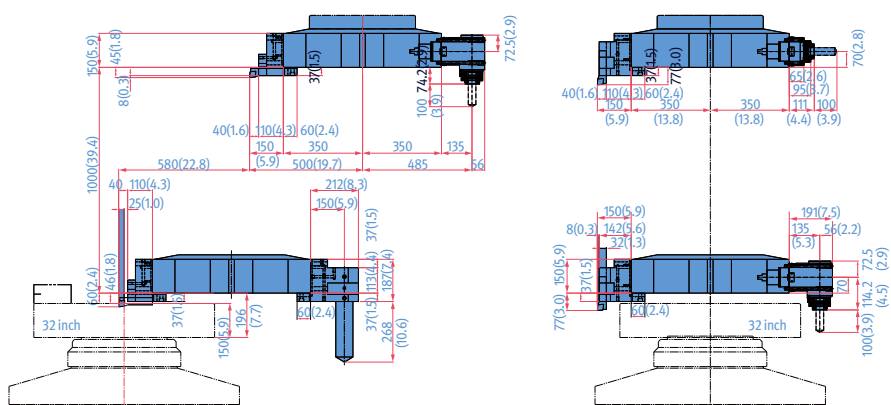


WORKING RANGE

PUMA VT1100



PUMA VT1100M



MACHINE SPECIFICATIONS

PUMA VT series

Description		Unit	PUMA VT1100	PUMA VT1100M	
Capacity	Swing over bed	mm (inch)	1270 (50.0)		
	Swing over saddle	mm (inch)	1000 (39.4)		
	Recom. turning diameter	mm (inch)	800 (31.5)		
	Max. turning diameter	mm (inch)	1100 (43.3)		
	Max. turning height	mm (inch)	960 (37.8)		
	Chuck size	mm (inch)	800 (31.5)		
Travels	X-axis	mm (inch)	580 (22.8)		
	Z-axis	mm (inch)	1000 (39.4)		
Feedrates	Rapid traverse rate	X-axis	m/min		
		Z-axis	m/min		
Main Spindle	Spindle speed	r/min	850		
	Spindle nose	ASA	ISO 702-4-No15		
	Spindle bearing diameter (Front)	mm (inch)	200 (7.9)		
	Spindle through hole	mm (inch)	100 (3.9)		
	Main spindle indexing angle (C-axis)	deg	-	360 (in 0.001)	
Turret	No. of tool stations	st	12		
	OD tool size	mm (inch)	32 (1.3)		
	Max. boring bar size	mm (inch)	ø80 (ø3.1)		
	Turret Indexing time (1 station swivel)	s	2.2		
Motor	Main spindle motor (FANUC)		kW (Hp)	65 / 55 / 45 (87.2 / 73.8 / 60.3) (S6 25% / S6 40% / S1 Cont.)	
	Main spindle motor (SIEMENS) (S6-60% / S1 Cont.)		kW (Hp)	55 / 44 (73.8 / 59.0)	
	Servo motor (FANUC)	X/Z axis	kW (Hp)	4.0 / 7.0 (5.4 / 9.4)	
	Servo motor (SIEMENS)	X/Z axis	kW (Hp)	4.0 / 9.0 (5.4 / 12.1)	
	Rotary tool spindle motor (FANUC)		kW (Hp)	-	11
	Rotary tool spindle motor (SIEMENS) (S6 25% / S1 Cont.)		kW (Hp)	7.0 / 7.5 (9.4 / 10.1)	
Power source	Electric power supply (FANUC) (rated capacity)		kVA	89.39	98.77
Machine Size	Height	mm (inch)	4012 (158.0)		
	Length	mm (inch)	2830 (110.4)		
	Width	mm (inch)	3305 (130.1)		
	Weight	kg (lb)	22000 (48501.0)	22550 (49713.5)	
Controller	Standard		Fanuc 32i		
	Option		DN Solutions Fanuc i Plus		
			SIEMENS 828D		

*{}: Option

RESPONDING TO CUSTOMERS ANYTIME, ANYWHERE

DN Solutions Global Network

DN Solutions provides systems-based professional support services, before and after the machine tool sale, by responding quickly and efficiently to customers. By supplying spare parts, product training, field service and technical support, we provide the expert care, attention and assistance our customers expect from a market leader.

Global sales and service support network		51	Technical centers Technical center, Sales support, Service support, Parts support
4	Corporations	200	Service posts
156	Dealer networks	3	Factories



CUSTOMER SUPPORT AND SERVICES

We're there for you whenever you need us.

We help our customers operate at maximum efficiency by providing them with a range of tried, tested and trusted services - from pre-sales consultancy to post-sales support.



Field services

- On-site service
- Machine installation and testing
- Scheduled preventive maintenance
- Machine repair service



Parts supply

- Supplying a wide range of original DN Solutions spare parts
- Parts repair service



Training

- Programming, machine setup and operation
- Electrical and mechanical maintenance
- Applications engineering



Technical support

- Supports machining methods and technology
- Responds to technical queries
- Provides technical consultancy



dn-solutions.com

Head Office

22F T Tower, 30, Sowol-ro 2-gil
Jung-gu, Seoul, Korea, 04637

Tel: +82-2-6972-0370/0350
Fax: +82-2-6972-0400

DN Solutions America

19A Chapin Road, Pine Brook
New Jersey 07058, United States

Tel: +1-973-618-2500
Fax: +1-973-618-2501

DN Solutions Europe

Emdener Strasse 24, D-41540
Dormagen, Germany

Tel: +49-2133-5067-100
Fax: +49-2133-5067-111

DN Solutions India

No.82, Jakkuar Village
Yelahanka Hobli, Bangalore-560064

Tel: + 91-80-2205-6900
E-mail: india@dncompany.com

DN Solutions China

Room 101,201,301, Building 39 Xinzhuan
Highway No.258 Songjiang District
China Shanghai (201612)

Tel: +86 21-5445-1155
Fax: +86 21-6405-1472

Sales inquiry

sales@dncompany.com

* For more details, please contact DN Solutions.

* Specifications and information contained within this catalogue may be changed without prior notice.